

T5

8T5HE/COR/22-850/MF10/G 25/1

Philips MainsFit (Type B) T5 LED tubes offer an affordable, energy saving retrofit solution to replace fluorescent T5 HE lamps. The double-ended design makes for a quick and simple installation. Our lamps have been engineered to withstand the test of time with a 50,000-hour lifetime and a limited 5-year warranty to back it up.

Product data

General information	
Base	G5 [G5]
EU RoHS compliant	Yes
Nominal Lifetime (Nom)	50000 h
Switching Cycle	50000
Light technical	
Color Code	850 [CCT of 5000K]
Beam Angle (Nom)	200 °
Initial lumen (Nom)	1050 lm
Color Designation	Daylight
Correlated Color Temperature (Nom)	5000 K
Luminous Efficacy (rated) (Nom)	131.00 lm/W
Color Consistency	<5
Color Rendering Index (Nom)	80
LLMF At End Of Nominal Lifetime (Nom)	70 %
Operating and electrical	
Input Frequency	50 to 60 Hz
Power (Rated) (Nom)	8 W
Lamp Current (Max)	84 mA
Lamp Current (Min)	31 mA
Wattage Equivalent	14 W

Starting Time (Nom)	0.5 s
Warm Up Time to 60% Light (Nom)	0.5 s
UL Type	TLED_Type B; UL classified double end
Power Factor (Nom)	0.9
Voltage (Nom)	120-277 V

Temperature	
T-Ambient (Max)	113 °F
T-Ambient (Min)	-4 °F
T-Storage (Max)	149 °F
T-Storage (Min)	-40 °F
T-Case Maximum (Nom)	158 °F

Controls and dimming	
Dimmable	Limited

Mechanical and housing	
Bulb Finish	Frosted
Bulb Material	Glass
Product Length	24 in
Bulb Shape	Tube, double-ended

Approval and application

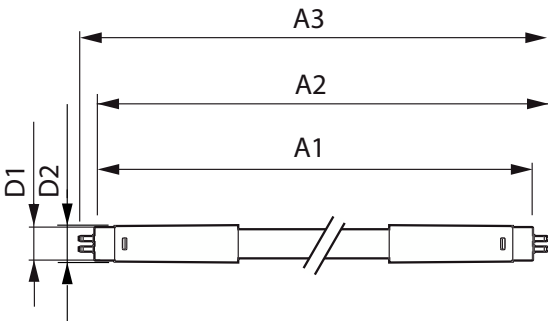
Energy Saving Product	Yes
Approbation Marks	RoHS compliance UL certificate

Product data

Order product name	8T5HE/COR/22-850/MF10/G 25/1
EAN/UPC - Product	046677576165
Order code	576165

Numerator - Quantity Per Pack	1
Numerator - Packs per outer box	25
Material Nr. (12NC)	929003122904
Net Weight (Piece)	0.176 lb
Model Number	9290031229

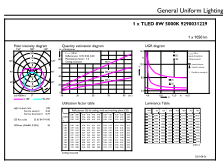
Dimensional drawing



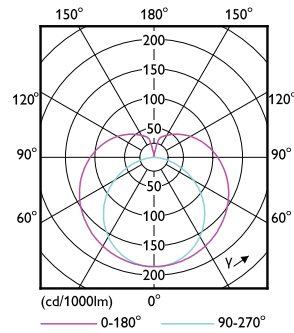
8T5HE/COR/22-850/MF10/G 25/1

Product	D1	D2	A1	A2	A3
8T5HE/COR/22-850/MF10/G 25/1	5/8 in	3/4 in	21-5/8 in	21-7/8 in	22-3/16 in

Photometric data

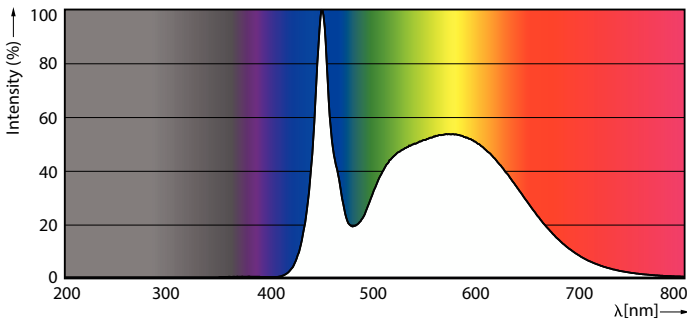


OSRAM Components US | Philips Lighting BV | Page 11



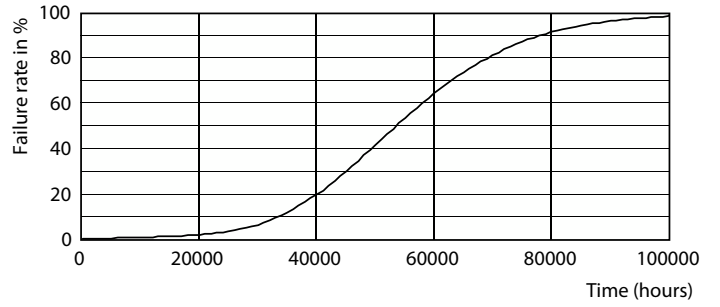
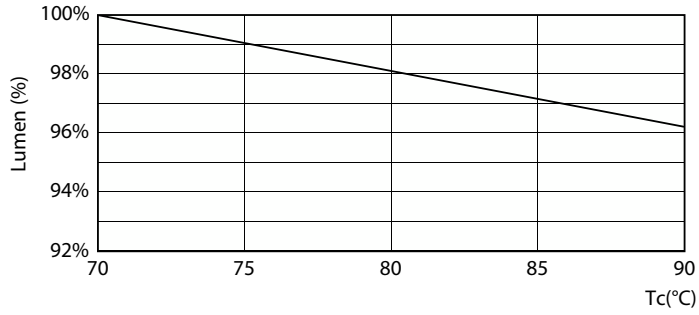
LEDtube COR NAM1 8W G5 1000lm-LDD

LEDtube COR NAM1 8W G5 1050lm 850-GUL

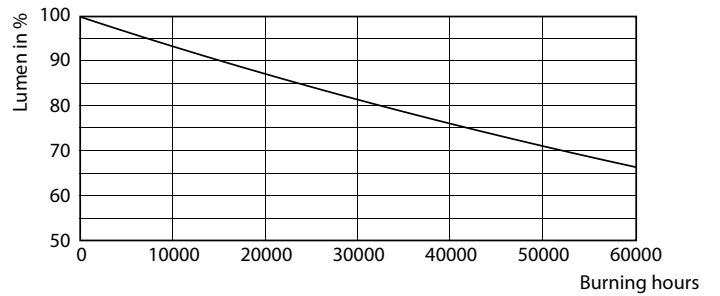
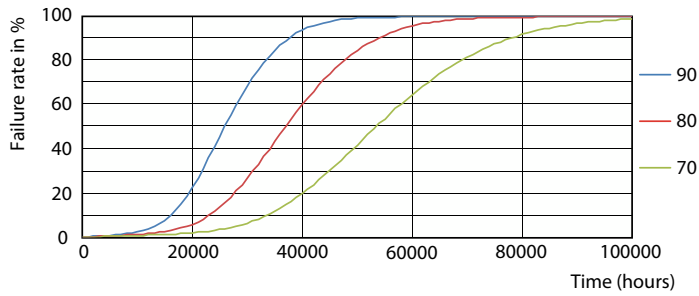


LEDtube COR NAM1 8W G5 1050lm 850-POC

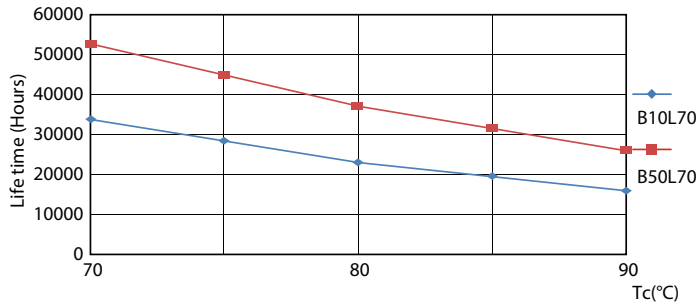
Lifetime



LEDtube COR NAM1 8W 50K LumenVsTc-LMP Life Expectancy Diagram



FailureRate Lumen Maintenance Diagram



LifetimeVsTc

