

T8

11.5T8/COR/48-840/IF21/G/DIM 25/1

Our TLEDs are available in InstantFit (Type A / Type C) or MainsFit (Ballast bypass / Type B) versions. The InstantFit lamps work on a broad variety of ballasts and LED drivers. Only InstantFit has over 15,000 lamp & ballast combinations delivering even light output, energy savings and a long lifetime. Our MainsFit products feature a double-ended design, simplifying installation while a proprietary safety circuit minimizes a shock risk. Lamp sizes range from 2-foot to 8-foot and U-bend with a variety of lumen outputs.

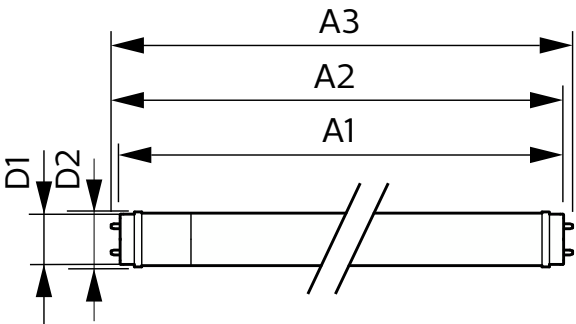
Product data

General information		Lamp Current (Max)	
Base	G13 [Medium Bi-Pin Fluorescent]	260 mA	
EU RoHS compliant	Yes	Lamp Current (Min)	
Nominal Lifetime (Nom)	50000 h	80 mA	
Switching Cycle	50000X	Starting Time (Nom)	
		0.5 s	
		Warm Up Time to 60% Light (Nom)	
		0.5 s	
		UL Type	
		TLED_Type A; UL listed HF	
		Power Factor (Nom)	
		0.9	
		Voltage (Nom)	
		120-277 V	
Light technical		Temperature	
Color Code	841 [CCT of 4100K (841)]	T-Ambient (Max)	
Beam Angle (Nom)	240 °	45 °C	
Initial lumen (Nom)	2100 lm	T-Ambient (Min)	
Color Designation	Cool White (CW)	-20 °C	
Correlated Color Temperature (Nom)	4000 K	T-Storage (Max)	
Luminous Efficacy (rated) (Nom)	182.00 lm/W	65 °C	
Color Consistency	<6	T-Storage (Min)	
Color Rendering Index (Nom)	80	-40 °C	
LLMF At End Of Nominal Lifetime (Nom)	70 %	T-Case Maximum (Nom)	
		40 °C	
Operating and electrical		Controls and dimming	
Input Frequency	25K to 105K Hz	Dimmable	
Power (Rated) (Nom)	11.5 W	No	
		Mechanical and housing	
		Bulb Finish	
		Frosted	

Bulb Material	Glass
Product Length	48 in
Bulb Shape	Tube, double-ended
Approval and application	
Energy Saving Product	Yes
Approbation Marks	DLC compliance
Approbation Marks	RoHS compliance UL certificate
Product data	
Order product name	11.5T8/COR/48-840/IF21/G/DIM 25/1

EAN/UPC - Product	046677580278
Order code	580274
Numerator - Quantity Per Pack	1
Numerator - Packs per outer box	25
Material Nr. (12NC)	929003556604
Net Weight (Piece)	0.441 lb
Model Number	9290035566

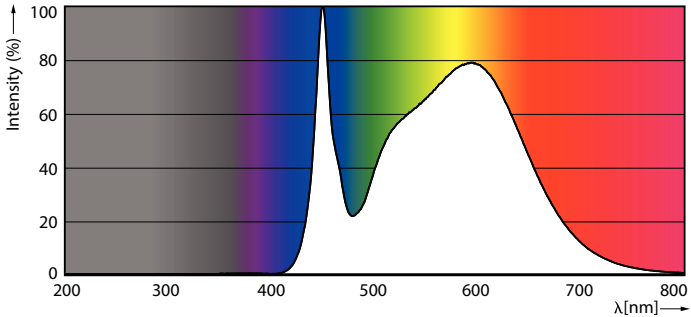
Dimensional drawing



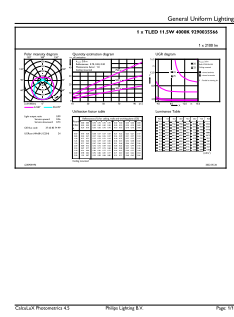
11.5T8/COR/48-840/IF21/G/DIM 25/1

Product	D1	D2	A1	A2	A3
11.5T8/COR/48-840/ IF21/G/DIM 25/1	1-1/16 in	1-1/16 in	47-3/16 in	47-1/2 in	47-3/4 in

Photometric data

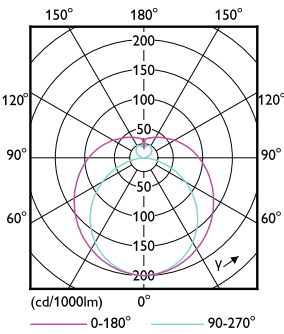


Spectral Power Distribution Colour



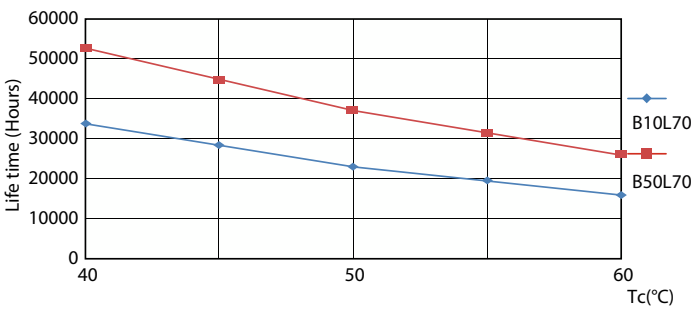
General uniform lighting

Photometric data

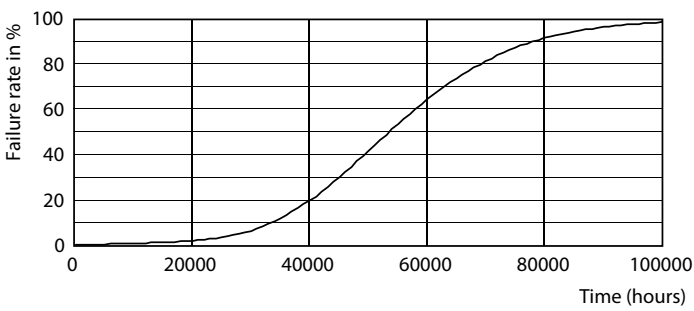


Light Distribution Diagram

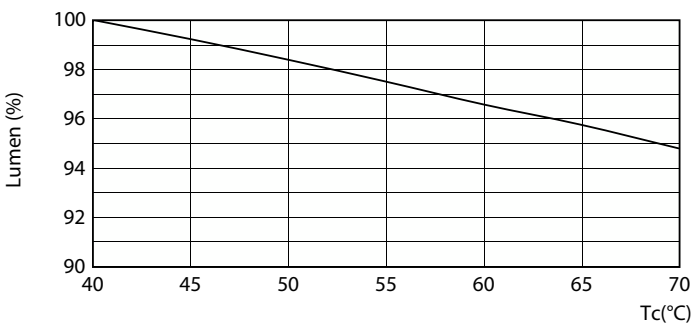
Lifetime



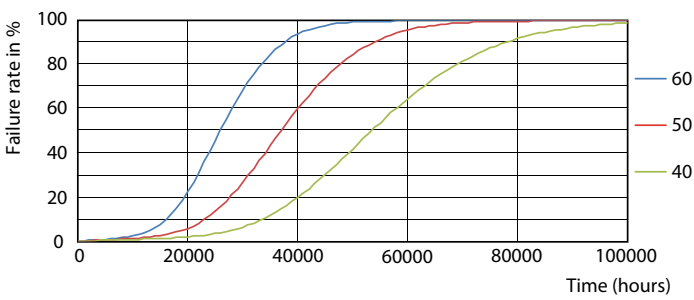
LifetimeVsTc



Life Expectancy Diagram

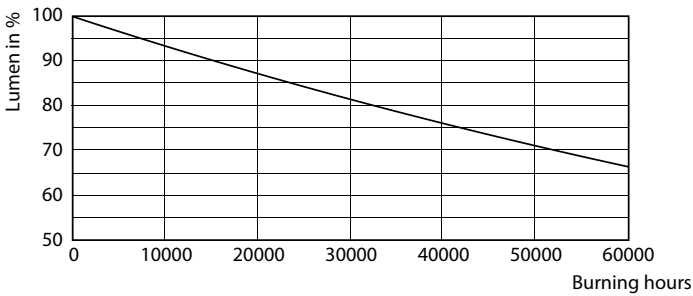


LumenVsTc



FailureRate

Lifetime



Lumen Maintenance Diagram

